

CFL-SP002C

SPECIALTY SERIES: FOREST SERIES



General Product Description

Liner Dimensions: 16' x 7' x 7.5' or to order

Depth of Relief: 3.0"

Dimensions and surface texture may vary according to project specifications

Fabrication and Installation

All liners are fabricated from urethane rubber (+/- 50 uses)

Form liners can be reinforced with wood or other suitable material as specified

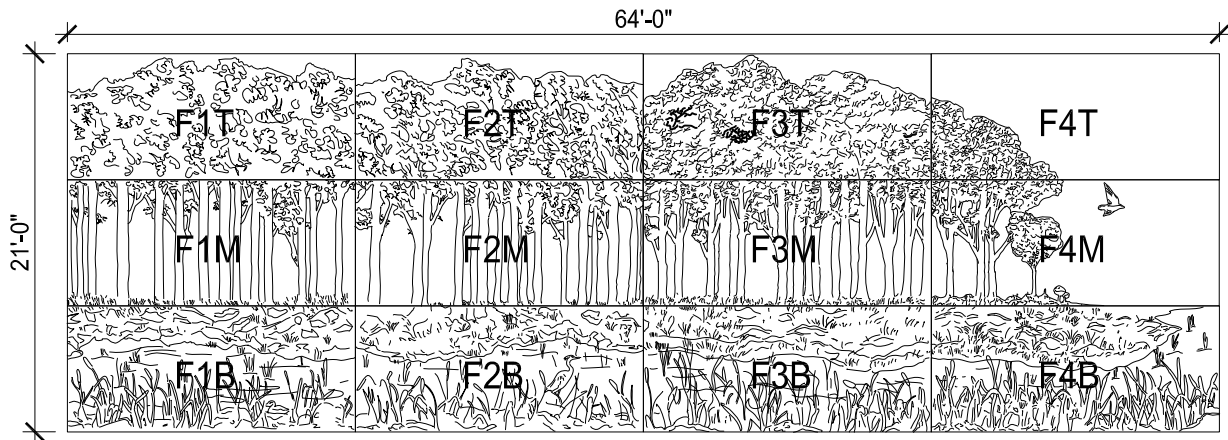
Release Agents

Release agents must be approved and applied according to CFL's installation instructions

NO SUBSTITUTIONS WILL BE ALLOWED WITHOUT PRIOR WRITTEN APPROVAL FROM PRODUCT ENGINEER OR ARCHITECT
Please call CFL for full specifications and installation instructions for our form liner products

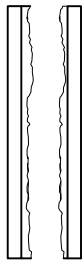
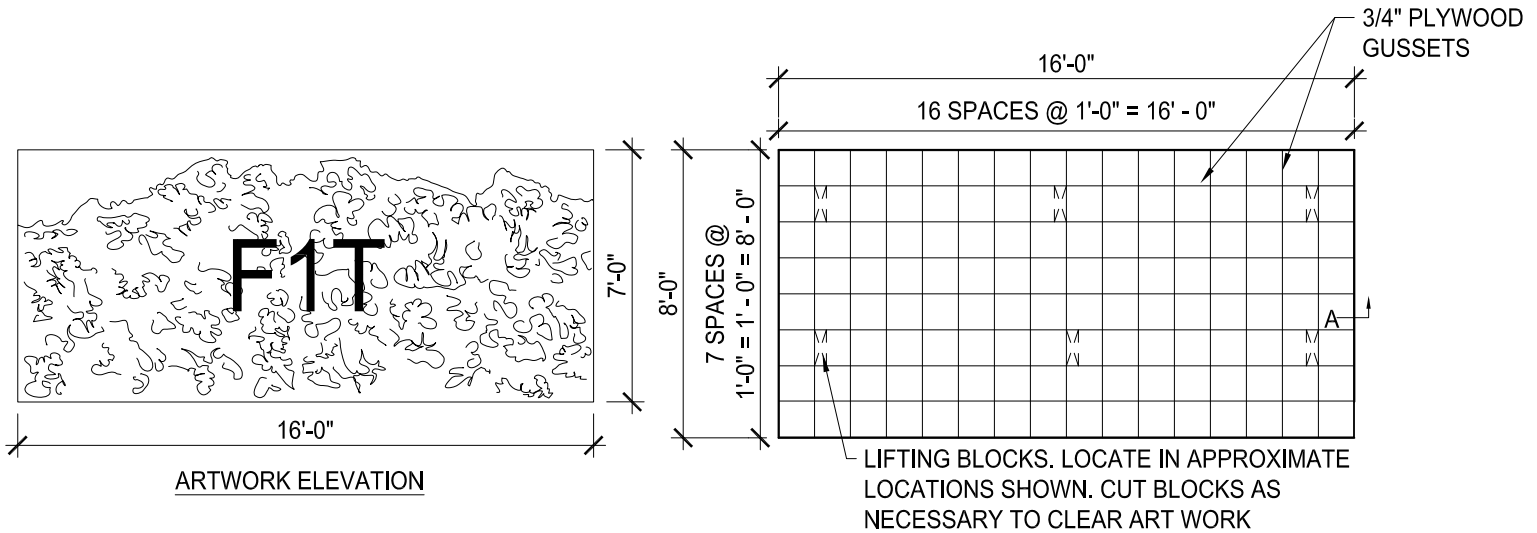
CFL-SP002C

SPECIALTY SERIES: FOREST SERIES

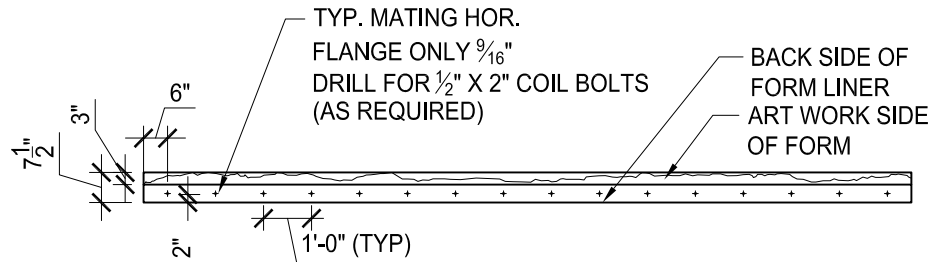


NO SUBSTITUTIONS WILL BE ALLOWED WITHOUT PRIOR WRITTEN APPROVAL FROM PRODUCT ENGINEER OR ARCHITECT
Please call CFL for full specifications and installation instructions for our form liner products

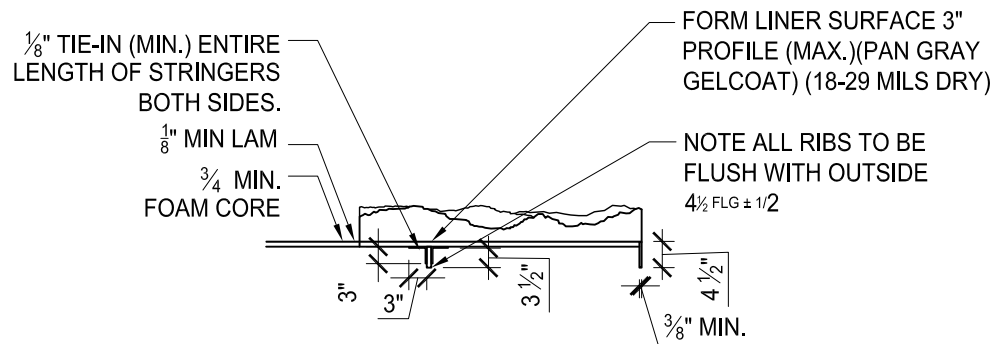
CFL-SP002C SPECIALTY SERIES: FOREST SERIES



TYPICAL SIDE VIEW OF PANEL



TYPICAL SIDE VIEW OF PANEL



SECTION - A TYP.
SIDE EDGE SECT

SECTION - A

NO SUBSTITUTIONS WILL BE ALLOWED WITHOUT PRIOR WRITTEN APPROVAL FROM PRODUCT ENGINEER OR ARCHITECT
Please call CFL for full specifications and installation instructions for our form liner products